

# Metro Arts



# 2025

ART STARTS HERE

Metro Arts pays its respect to the Traditional Custodians of the lands on which we work and create.

We honour the story-telling and art-making at the heart of First Nations' cultures, and the enrichment it gives to the lives of all. Metro Arts recognises the importance of story and expression in the process of truth-telling, and we commit to support First Nations Peoples on this journey.

**Always was. Always will be.**

## WELCOME

### THE HOME OF ARTIST DEVELOPMENT

Metro Arts proudly stands as Queensland's leading home for artist development, with 45 years of history shaped by resilience, creativity, and a commitment to those who forge our cultural future. We champion emerging and independent artists as the foundation of a thriving arts ecosystem.

The future of the arts depends on supporting artists at all stages of their careers—whether starting their creative journeys or solidifying their legacy. Breaking through career development barriers requires meaningful support and bold action. Metro Arts bridges these gaps, empowering artists to challenge conventions and enrich our cultural landscape.

In 2025 we are excited to be working closer than ever with our program artists and partners to deliver engaging works that meaningfully resonate.

### The Metro Arts Team



## WHAT'S ON

### PERFORMANCE

#### DRAGSPEARE

Jo Loth and Anne Pensalfini  
18 - 28 June

#### DANCE NATION

By Clare Barron, THAT Production Company  
20 - 30 August

#### UNVEILING SHADOWS

Joshua Taliani  
10 - 13 September

#### BAHALA/O

Buddy Malbasias  
19 - 29 November

### FRIENDS OF METRO

*We always have Friends of Metro using our spaces to host community events, performances, exhibitions, workshops and more. Visit our website to keep up to date with new events.*

### VISUAL ART

#### REMOTE CONTROL

Metro Arts  
17 April - 10 May

#### THAT I SHOULD PRAY FOR ANGELS

Micah Rustichelli  
22 May - 14 June

#### CHROMALINEA

James Randall  
22 May - 14 June

#### THE CHURCHIE EMERGING ART PRIZE

'the churchie'  
25 July - 9 August

#### TERRA CULTURE




Bianca Tainsh  
4 September - 15 November

#### A MAN THAT DIDN'T HAVE BETRAYAL IN HIS HEART

Anastasia Booth  
4 September - 15 November



For more events and details on What's On at Metro Arts, scan the QR code, visit our website, or follow us on socials.

 [metroarts.com.au](https://metroarts.com.au)  
 [metroartsbrisbane](https://metroartsbrisbane)  
 [metroarts](https://metroarts)



# PERFORMANCE PROGRAM

---

We're bringing you four bold, original, independent works that speak to this moment — funny, moving, provocative, and deeply human.

As you've come to expect from Metro Arts, these are stories shaped by artists who ask big questions and take creative risks. Whether you're after a night of wild cabaret, thoughtful theatre, or something you've never seen before, this season offers work to stir, delight, and challenge.

We're proud to support the independent artists and companies behind these works and proud to share them with you.

---

***"In 2025, we're deepening our commitment to performance that matters: work that meets the world with urgency and imagination, and that charts its own course — aesthetically and socially. We invest in people, champion creative risk, and build the conditions for long-term artistic and cultural impact."***

**- Benjamin Knaption** *Artistic Associate (Performance)*



*Bahala/o*, Buddy Malbasias. Photo by Georgia Haupt.



*Unveiling Shadows*, Joshua Taliari. Photo by Jade Ellis.





PERFORMANCE

CABARET

# DRAGSPEARE

BY JO LOTH AND ANNE PENSALFINI

Presented by Metro Arts

## Drag Kings Do Shakespeare

Five drag kings on their Queensland tour take on Shakespeare with stupidity, spoof, and sincerity, smashing iconic songs against the Bard in a bold new high-energy cabaret.

A camp, chaotic, and unexpectedly heartfelt ride, the Stallion Squad are ready to prove they're more than just eye candy.

**"DragSpeare is an unmissable highlight"**

– Creative Futures

**DATES:** 18 Jun - 28 Jun

**TIME:** 7:30pm

**TICKETS:** \$45 | \$39 + Booking fee

**SUITABLE:** Recommended for ages 18+

Visit our website for more details.

PERFORMANCE

THEATRE

# DANCE NATION

BY CLARE BARRON, PRODUCED BY THAT PRODUCTION COMPANY

Presented by Metro Arts

## Fierce ambition, rivalry, and the messy journey of growing up

Told with humour and heart, a group of young dancers strive for success in the national competition. As they navigate the messy journey of growing up, they confront ambitions, friendships, rivalries, sexual awakenings – all while facing the struggle of who you are, and who the world expects you to be.

**"The ride for the audience is...extreme, confronting, hilarious, outrageous, thrilling and shocking"**

– The Adelaide Advertiser

**DATES:** 20 Aug - 30 Aug

**TIME:** 7:30pm

**TICKETS:** \$45 | \$39 + Booking fee

**SUITABLE:** For ages 13+

Visit our website for more details.



Photo by Stage Shots.



Photo by KTB Media.



PERFORMANCE DANCE

# UNVEILING SHADOWS

BY JOSHUA TALIANI

Presented by Metro Arts and Brisbane Festival

BRISBANE  
FESTIVAL

## A journey through silence

*Unveiling Shadows* is a powerful exploration of survival, healing, and culture. Through intimate storytelling and movement, Joshua Taliani confronts inner demons, revealing silent struggles. Blending trauma, silence, and self-destruction with artistic expression, the work illuminates the hidden challenges within the human psyche.

**DATES:** 10 Sep - 13 Sep

**TIME:** 7:30pm

**TICKETS:** \$45 | \$39 + Booking fee

**SUITABLE:** For ages 16+

*Visit our website for more details.*

PERFORMANCE DANCE

# BAHALA/O

BY BUDDY MALBASIAS

Presented by Metro Arts

## *Bahala Na - Whatever happens, happens!*

Step into a surreal rice-filled fantasy where identity gets messy. *Bahala/o* is a bold Queer Immigrant Filipino story on stage—mixing dance and theatre as two performers navigate the tension between tradition and self.

It's a playful, thought-provoking dive into what it means to live between worlds.

**DATES:** 19 Nov - 29 Nov

**TIME:** 7:30pm

**TICKETS:** \$45 | \$39 + Booking fee

**SUITABLE:** For ages 16+

*Visit our website for more details.*



Photo by Georgia Haupt. Graphic Design by Josh Regan.

# PERFORMANCE ARTIST PROFILES



## DRAGSPEARE ENSEMBLE

### DRAGSPEARE

The DragSpeare ensemble are a powerhouse of local artists featuring: Lucinda Shaw (Pan Tastetickle), Anne Pensalfini (Biron Bothways), Jo Loth (Swingin' Dick), Jules Berry (York Lit), and Michelle Lamarca (Rocky V Liquor). Developed through a collaborative process for the 2024 MELT Festival, *DragSpeare* is an irreverent, playfully subversive cabaret that celebrates queer joy. The ensemble is thrilled to welcome Bridget Boyle (director), Neridah Waters (choreographer) and NJ Price (fight director) to the 2025 Metro Arts season.

Post-show, your Kings will be in the foyer for chats and cheeky pics. Keep an eye on Metro Arts' socials and website for backstories and what makes each King tick.



## THAT PRODUCTION COMPANY

### DANCE NATION BY CLARE BARRON

THAT Production Company is a multi award-winning independent theatre company based in Ipswich, Queensland. They produce classic and contemporary texts and cultivate theatrical experiences that resonate with their quest for understanding the world around them. THAT Production Company have a long history with Metro Arts reaching back to 2009 with the company's inaugural season presented in the Lumen Room at 109 Edward Street. Since then, THAT Production Company has presented five works in various collaborations with Metro Arts, most recently their Matilda Award winning production of *Every Brilliant Thing* by Duncan Macmillan with Jonny Donahoe which will embark on a Queensland tour later this year.

THAT Production Company is thrilled to bring *Dance Nation* by Clare Barron to Metro Arts in 2025 in a celebration of old collaborations and new in this ambitious, bold and darkly funny Queensland premiere.



## JOSHUA TALIANI

### UNVEILING SHADOWS

Joshua Taliani is a First Nations (Bidjara/Kullali/Wakka Wakka) Italian Artist and Performer.

Working across genres, from street dance to dance theatre, Joshua's practice has been grounded in hip-hop but his experience includes contemporary dance.

Joshua's signature style is heavy on open choreography and infused with the art form of vogue (a part of the Ballroom culture). Joshua is also the Father of the Trailblazing House of Alexander – a leader in the queer BIPOC community which continues the legacy of Harlem's Ballroom culture of creating space for, and helping to nurture, Trans and queer BIPOC.

From 2023 to 2025, Joshua has been a Metro Arts Artist in Residence. During this time, he has received artistic support, access to creative space, and dedicated development time, resulting in the 2025 premiere of *Unveiling Shadows*.



## BUDDY MALBASIAS

### BAHALA/O

Buddy Malbasias is an independent artist-researcher, creative director, choreographer and performer of Filipino Bukidnon descent. His practice exists at the intersection of contemporary performance, waacking and interdisciplinary experimentation, expanding into cultural/familial reconnection, queer identity and imaginative world-building.

Grounded in the Filipino diaspora, Buddy crafts a profound exploration of the self, an inquiry on cultural hybridity and a meditation on duality. His work weaves gestural intensity, dramatic theatricality and found objects to create evocative experiences that challenge, connect and resonate.

With the support of organisations like Studio1 and Backbone Youth Arts, Buddy has been developing *Bahala/o* over the last 18 months, collaborating with diverse creatives, communities and dance makers.



Photo by Charlie Hillhouse.



# VISUAL ARTS PROGRAM

Metro Arts has long been home to outstanding artists pushing boundaries and taking risks. This spirit remains strong and more focused than ever.

The Visual Arts program strives to empower artists to evolve their practices, develop their skills and take a stride forwards into the next major chapter of their career.

The Visual Arts program centres around extended residency periods at the Metro Arts Visual Art (MAVA) Workshop, supported by Metro Arts' team.

## VISUAL ARTS RESIDENCIES

In 2025, Metro Arts is facilitating three residencies: 2 x 9 week residencies and 1 x 20 week residency, providing artists with dedicated studio space, access to the fully-equipped MAVA Workshop (including practical training on tools and machinery) and expert mentorship. Artists will take a concept from idea to premiere exhibition over the course of their residency, delivering an entirely new body of work.

Throughout their residencies, the artists will document parts of their experience and explorations through blog updates uploaded to our website.



EXPLORE THE LATEST  
FROM OUR RESIDENTS

***"We see these residencies as a significant opportunity for artists to extend, expand, and enhance their current practices. The combination of dedicated studio space, access to our workshop and financial support is critical in enabling the continued growth of any arts sector. I am thrilled to work alongside them and provide support as they push the boundaries of their arts practice."***

**- Daniel Clifford** *Artistic Associate (Visual Arts)*



Photo courtesy of the artist.



## EXHIBITION

# THAT I SHOULD PRAY FOR ANGELS

BY MICAH RUSTICHELLI

Presented by Metro Arts | 9 Week Residency

### **Survival can have many meanings**

*That I Should Pray For Angels* is a sculptural exhibition that has a cheeky play with the world of preppers. Combining the materials of survivalists with queer culture and religious text, this project envisions a post-climate future of nylon, tarp, intimate abandon and apocalypse.

**DATES:** 22 May - 14 Jun

**VENUE:** Gallery One + Window Gallery

**EVENT:** FREE | Artist Talk + Opening event, 22 May

*Visit our website for more details.*

## ARTIST PROFILE



Micah Rustichelli is an interdisciplinary artist working on Jagera and Turrbal land, Brisbane.

With a strong focus on performance, sculpture and painting, Micah's work operates across modes of fine arts, circus and club kid/nightlife arts. This cross-pollination of forms has led the artist to a practice that uses humour, queer knowledge and intersectional materials to explore contemporary concerns with a wide range of audiences.

Micah has developed this unique practice through residency opportunities such as the Workroom Program at Studio 1, the Queer Development Program with Performance Space, and on various stages from Dark Mofo to Woodford Folk Festival. In 2023 Micah took the inaugural title of 'Ultimate Showdown Champion' against 60 Brisbane nightlife performers and 'Artist of the Year' at the 62<sup>nd</sup> annual Queens Ball.

***"I love to take these materials and arrange them in cheeky ways. There's a brattiness I enjoy in taking this deeply serious and proactive material and making it silly or strange. I think there's a very queer way of grieving and processing in that."***

***"Queer people have a long history of community care, action and survival in the face of crisis. 'That I Should Pray For Angels' is inspired by ways that we may continue to survive in togetherness in the face of oncoming natural and political catastrophes."***

Want to learn more about this artist?

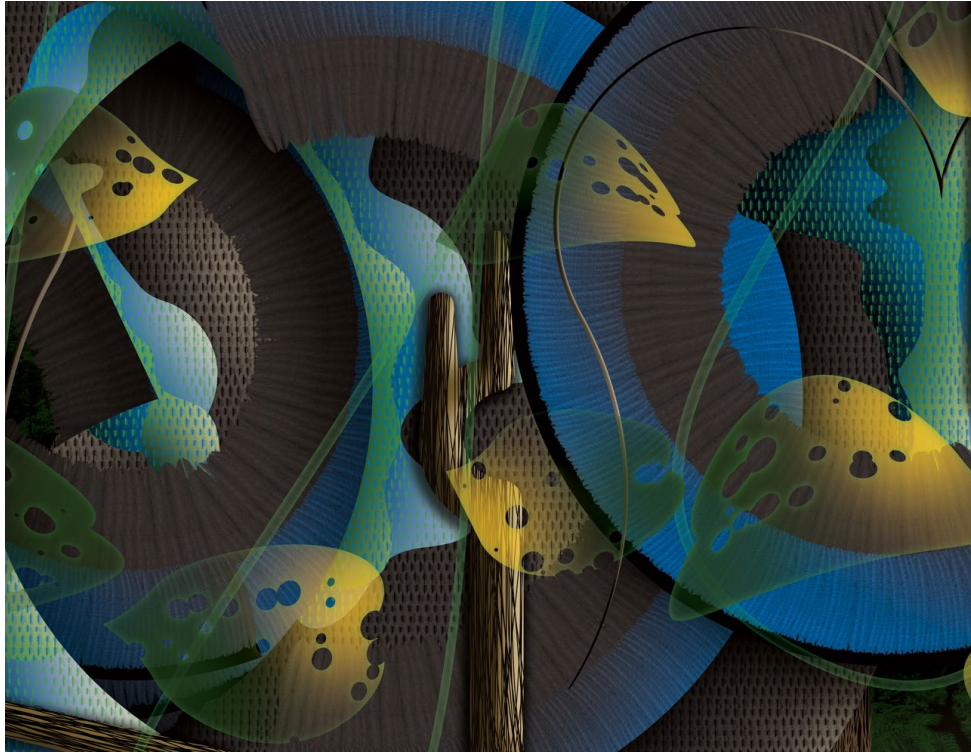
@Micah.Rustichelli

MicahRustichelli.com

Headshot by Kris Anderson.



Photo courtesy of the artist.



EXHIBITION

PARTNERSHIP

# CHROMALINEA

BY JAMES RANDALL

Presented by Metro Arts and the Brisbane Portrait Prize



## The power of colour and form

This showcase exhibition highlights the work of James Randall, winner of the Metro Arts Experimental Portraiture Prize at the 2024 Brisbane Portrait Prize.

"I used to think that art was all about the artist – the style, the artist's own presentation, all the crazy stuff that swirls around them. Artists were mysteries to me. Now I know that the strength of art lies in the interpretation of the world around us. Finding a place and a truth in the world."

– James Randall

**DATES:** 22 May - 14 Jun

**VENUE:** Gallery Two

Visit our website for more details.

@james.randall1612

EXHIBITION

PARTNERSHIP

# THE CHURCHIE EMERGING ART PRIZE 2025

## FINALISTS' EXHIBITION

Presented in partnership with 'the churchie'

the  
churchie  
emerging art prize

### Exceptional emerging artists from across Australia

Australia's most diverse art prize for emerging contemporary artists, the churchie emerging art prize ('the churchie') returns in partnership with Metro Arts for its second year.

Now in its 38<sup>th</sup> year, 'the churchie' is Australia's longest-running prize for emerging artists and provides an exceptional platform for career opportunities, education, and direct engagement with the broader arts community.

**DATES:** 25 Jul - 9 Aug

**VENUE:** Metro Arts Galleries and New Benner Theatre

**EVENT:** FREE | Opening event, 25 July, 6:00pm

Visit our website for more details.

@thechurchieemergingartprize



The churchie emerging art prize, 2024. Photo by Charlie Hillhouse.

## EXHIBITION

# A MAN THAT DIDN'T HAVE BETRAYAL IN HIS HEART

BY ANASTASIA BOOTH

Presented by Metro Arts | 9 Week Residency

*A series of minimal sculptures capturing foolish youthful sensuality and deviance*

*A man that didn't have betrayal in his heart* harkens back to a younger me, poetically reconstructing engagements in erotic scenario by delving into past memories. Capricious and foolish longing, desire gone awry and where the toil of sensuality (its unpronounced labour) is a submission to melancholy. Instead of using erotic abstraction and post-structuralism to reclaim intimacy, these sculptures revel in floundering inadequacy. An ontology both anxious and self-aware which draws from minimalism, love hotel interiors, industrial materials, kink environments, classical statuary, ball gags, fetishism and diaristic modes. Fragments amass into minimal scapes of mock dramaturgy, where luxury and sensuality are fraught with cheapness, unable to sustain the projections of arousal we attribute to them.



Photos courtesy of the artist.

**DATES:** 4 Sep - 15 Nov

**VENUE:** Gallery Two

**EVENT:** FREE | Artist Talk + Opening Event, 4 Sep.

*Visit our website for more details.*

## ARTIST PROFILE



Anastasia Booth teases arts erotic potential as fragmented or flawed substitute. By interleaving the languages of Freudian fetishism, kink, dark fantasy, feminism, history and personal anecdote, she ponders, can the artist as an agentive and deviant subject fight off gendered limitations and her own sexual failures. The dialogues she dabbles in can be problematic and contradictory, where no real answer is forthcoming. Leather, glass, lustrous metals, sex toys, latex, timber, hair and lube inspire minimalist forms that build perplexing relationships to the body. Situated in a liminal zone these works engage with the imitative fragment and confuse it with the veritable subject. A trace of material recalling the erotic despite any prior purpose, the benign surface enacting pleasure and moral consequence.

Anastasia works in Brisbane, Australia. She refined her craft at the Queensland University of Technology, completing her Practice-led Honours and Doctoral study. Her work has been exhibited nationally, including projects at The Perth Institute of Contemporary Arts, Institute of Modern Art, Museum of Contemporary Art, University of Queensland Museum, Griffith University Art Museum, Milani Gallery CARPARK, The Australian Experimental Art Foundation and was artist in residence at Outer Space.

***"My practice has been predominantly concerned with opening spaces to represent a multiplicity of desire and agency. Specifically, by implementing fetishism as a productive lens, removing it from notions of the unconscious into a mode for production and self-actualisation."***

***"In a sparse and minimal space my sculptures often form nodes of material luxuriant with a punch line. Ready-mades and industrial surfaces clash, poetically arranged to create perplexing material surrogates."***

Want to learn more about this artist?

@anastabooth

anastasiabooth.com



## EXHIBITION

# TERRA CULTURE

BY BIANCA TAINSH

Presented by Metro Arts | 20 Week Residency

### Exploring agency and culture beyond the human experience

*Terra Culture* is an exploration of terra-biomes — symbiotic bodies of flora and microfauna, intimately connected by underground fungal networks.

Audiences will encounter an immersive space, where interaction with living sculptures invites human entanglement in the complex agency and culture of other natural beings. The exhibition will also provoke a visceral self-identification, uncovering the human state as its own multi-species biome.

Over two years, this project has evolved through collaborations with ecologists and computing researchers in conjunction with sculptors and fabricators, ultimately leading Tainsh to create portals connecting us with more-than-human intelligence.



**DATES:** 4 Sep - 15 Nov

**VENUE:** Gallery One + Window Gallery

**EVENT:** FREE | Artist Talk + Opening Event, 4 Sep.

*Visit our website for more details.*

# ARTIST PROFILE



Bianca Tainsh is a multi-artform artist, based in Meanjin Brisbane and on Lake Weyba, Kabi Kabi Country. Through a hybrid practice of contemporary art and fluid forms of ecological activities Tainsh explores issues such as the cyber-saturated human's disconnect from the natural world and the search for spirituality in the epoch of digital culture. In Tainsh's current work, Neo-animism forms the trope for artefacts and rituals that unveil new forms of coexistence and being.

Tainsh's work takes the form of video, digital and semi-traditional media, assemblages, installation and live art. Organic imagery, materials and processes find new meaning as they meet the aesthetics of digital production. Tainsh considers the more-than-human organisms she works with to be collaborators in her artmaking.

***"I am an interdisciplinary thinker in both my research and artmaking, and this is reflected in the design of my new works."***

***"My new series of terra-biomes will reveal the interspecies relationships integral to all life, including our own bodies. This perspective poses the question: What can these systems of mutuality and diversity teach us about living as cohesive beings, deeply interconnected with the biosphere and the other beings we share it with?"***

Want to learn more about this artist?

@Bianca.Tainsh

BiancaTainsh.com

Headshot by Josef Ruckli.



## FIRSTDRAFT PARTNERSHIP **firstdraft**

At the beginning of 2025, Metro Arts partnered with Firstdraft to display the works of two regional visual artists from both New South Wales and Queensland. *Additional information about the exhibitions and artists can be found on our website.*

### UN/CONSCIOUS BY JAMIE-LEE GARNER

*un/conscious* is a large-scale artwork that featured a collection of sixteen brightly coloured tactile canvases, creating a kaleidoscopic wall of colour.

Colour is an entity, a portal, a phenomena that arises through the interplay of light and sight. By itself, light has no colour or brightness, it is a series of pulsing waves of electromagnetic radiation interacting with our neurology in order to create what we see as colour. In a sense we put a little bit of ourselves into each colour as we observe it.

### tightly wound BY DANISH QUAPOOR

*tightly wound* featured textile works from Danish Quapoor's recent good grief series, recontextualising them amongst related works.

The title references both the laborious process of creating the works and the related personal memories, anxieties and catalytic concepts explored within. These include grief, memorialisation, prophecies, expectations, gender roles and sexuality.



Photo by Jim Barker.



Photo by Louis Lim.

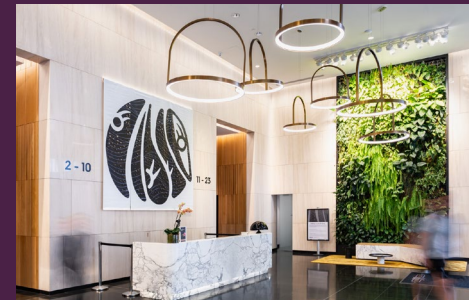
## METRO ARTS PUBLIC ART

*Follow our socials for updates and news about future public art projects.*

Metro Arts Public Art commenced in 2024 to create connections between artists and government/corporate entities seeking to elevate cultural engagement and placemaking. This helps to establish opportunities for emerging to mid-career artists looking to expand their artistic practice into public spaces.

Drawing from Metro Arts' 45+ years of experience in fostering the creation of art, Metro Arts Public Art works with clients to find the perfect match. At Metro Arts, we understand many artists have exceptional skills and practices that may be developed and extended outside a traditional gallery setting.

In 2024, we had multiple artists commissioned with their works installed throughout Brisbane. These included Ivy Minniecon at 66 Eagle Street and Elysha Rei at 300 Queen Street. Additionally, Metro Arts assisted clients in leasing existing artworks for their spaces.



Kambar (White Clay), Ivy Minniecon, 2024. Photo by Louis Lim.



Brisbane Koi, Elysha Rei, 2024. Photo by Metro Arts.

## BEMAC PARTNERSHIP **BEMAC**

A dynamic 2025 partnership between BEMAC and Metro Arts supports bold new Australian work through a creative residency providing artists with space, funding, and guidance to develop ambitious projects from concept to presentation.

### A CREATIVE DEVELOPMENT OF CHAMELEON

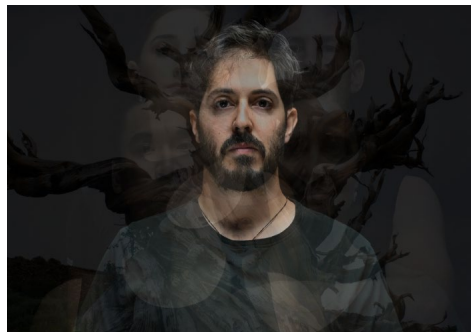


Photo by Anges Costes.

*A father and son's journey to acceptance and belonging.*

*Chameleon* is a new contemporary ballet with original music composed by Tsoof Baras and choreography by Rani Luther. Using animal allegory, the story reflects the challenges of integration and explores the journey of a father and son searching for acceptance while remaining true to their cultural roots.

@tsoofbaras

tsoofbaras.com

# METRO ARTS BAR

**OPEN THURSDAYS & FRIDAYS FROM 5:00PM**

Waiting for a performance or got a gallery date? Metro Arts' bar offers a range of wines, spirits, local drinks, and cocktails.

Every dollar you spend at the Metro Arts bar goes towards supporting artists and the incredible work they produce.



# MAVA WORKSHOP

## A CREATIVE HUB FOR ARTISTS AND MAKERS

The Metro Arts Visual Arts Substation ('MAVA Substation') was formerly known as Substation No. 9; and was used to supply power to Brisbane's long forgotten tram system. Since 2007 Metro Arts has leased the substation from Brisbane City Council, providing much needed space to local artists and the community.

**MAVA workshop membership is available to the public and community.**

### How can the community use the space?

#### PROTOTYPING

Testing, brainstorming and experimenting with ideas and models before large-scale development in Public Art, Contemporary art exhibitions or home DIY projects.

#### SIGN CREATION

Creating custom signs and text art works for exhibition projects or home DIY jobs.

#### TOOL MAKING

Creating custom tools such as knives, spanners, bottle openers and many more self-directed projects.

#### SCULPTURE CREATION

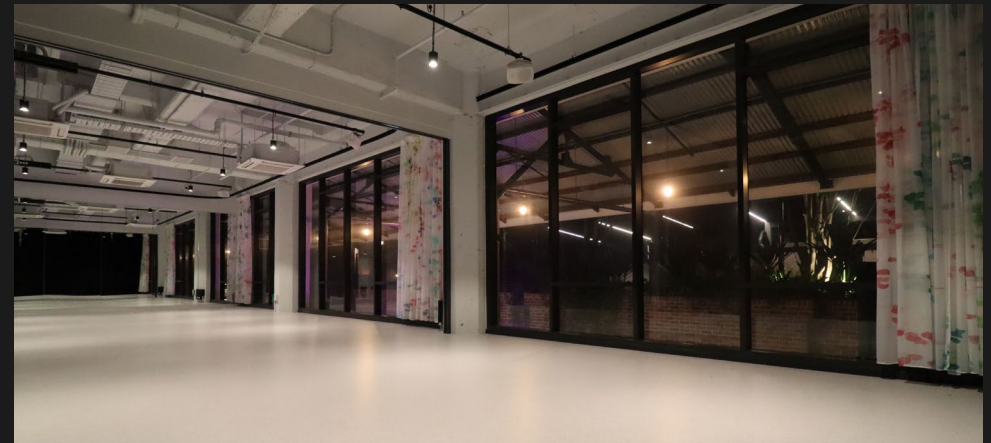
Mould-making, wood-carving, armature design, clay building, plinth building, and fabrication.

#### RESTORATION

Furniture design and up-cycling materials.



**FIND OUT  
MORE**



## EVENTS + VENUE HIRE

Affordable hire for your upcoming creative endeavour, workshop, reading or special event.

Metro Arts' offers a variety of venues to suit capacities from 1 - 100+, with an expert team ready to help make your occasion come to life.

Hirer fees go directly towards supporting the arts in Queensland.

#### NEW BENNER THEATRE

Theatre productions, performances, conferences, product launches, film festivals and more! Up to 110 seated or 120 in flat floor configuration.

#### FACTORY LANE

Parties, cocktails, speeches and pre-and-post event functions. Great for being hired in conjunction with the galleries for openings.

#### GALLERIES

Solo and groups exhibitions, events, photography and video shoots.

#### STUDIOS

Workshops, dance classes, conferences, and private events. A versatile space that can accommodate up to 87 visitors.

Visit [metroarts.com.au/venues](https://metroarts.com.au/venues) to find more info + specifications of each venue.





**ADDRESS:** 97 Boundary St, West End QLD 4101

## VISITING US

### ACCESSIBILITY

Metro Arts is dedicated to supporting access and making everyone feel welcome. Please contact Metro Arts on 07 3002 7100 or [info@metroarts.com.au](mailto:info@metroarts.com.au) for patrons requiring assistance.

Metro Arts supports the Companion Card program. For patrons who require the assistance of a companion or carer, a second ticket is issued at no cost to the Companion Card holder. Please phone Metro Arts during business hours to organise.

### LOCATION

The easiest way to access Metro Arts is to enter West Village from Boundary Street, wander through the garden area known as The Common, and make your way down Factory Lane.

Factory Lane is our outdoor bar and foyer space, and the centre of our Metro Arts precinct. From there you can access our bar and galleries or venture downstairs to our intimate, underground theatre space.

### PUBLIC TRANSPORT

The closest stops are the 199, 198, 196, 192 and 60 bus routes. We are also located within a short walk from the South Brisbane train station and Cultural Centre busway. Visit the Translink website to plan your best route.

### PARKING

West Village has 450 secure on-site parking bays (free for 2 hours) accessible via Mollison Street. Alternatively, there is limited on street parking available but please note parking meters may apply.



**SCAN HERE TO PLAN YOUR NEXT VISIT.**

### BOOKINGS

[metroarts.com.au](http://metroarts.com.au) or  
Phone: 07 3002 7100

### BOX OFFICE - Opening Hours

Mon – Fri 10am – 4pm  
and 90 minutes prior to performance start time.

# OUR PARTNERS

## Government Partners



Queensland  
Government



*Dedicated to a better Brisbane*

Metro Arts is supported by the Queensland Government through Arts Queensland. The Metro Arts Creative Development and Artist Residency Programs are proudly supported by Brisbane City Council. Metro Arts Visual Arts (MAVA) Substation is assisted by Brisbane City Council.

## Programming Partners

BLAK DANCE

BRISBANE  
FESTIVAL



the  
churchie  
emerging art prize

firstdraft

BEMAC

WEST VILLAGE  
BRISBANE

SEKISUI HOUSE

## Education Partner



## Print Partner

Printing  
& More  
West End



## Media Partner

BAMBRICK

## Strategic Partners



D-N-Y  
CINEMAS



HARE & FORBES  
MACHINERY HOUSE

## Corporate Donor

HALL CHADWICK  
CHARTERED ACCOUNTANTS & BUSINESS ADVISORS | QLD

## Partners

BONES  
ACCOUNTING

OATLEY  
FINE WINE MERCHANTS

AETHER  
BREWING

Metro Arts gratefully acknowledges the generosity of all our donors. We acknowledge Tim and Gina Fairfax for their generosity as founding donors of the Metro Arts Future Fund.



# ART STARTS HERE

metroarts.com.au   
metroartsbrisbane   
metroarts 

info@metroarts.com.au  
(07) 3002 7100

97 Boundary Street, West End QLD 4101