

2021 CALL FOR PROPOSALS

2021 Artist in Residence Program Application Guide

About Metro Arts

Metro Arts is developing the future of Australian contemporary arts practice, now.

At Metro Arts we:

- Develop and co-present contemporary arts
- Create and champion quality contemporary arts
- Professionally and artistically develop, challenge and support artists
- Nurture existing audiences and develop new audiences
- Unite artists and their work with these audiences

Visit our [website](#) for more information.

Metro Arts is excited to announce our Call for Proposals for the **Artist in Residence Program for 2021**. Incorporating two unique venues, this initiative gives artists the opportunity to choose the site most suited to developing their practice. Artists of all disciplines are invited to pitch an idea, taking into account the specific features, requirements and possibilities of each site.





Artist in Residence Program

Our 2021 Artist in Residence Program offers artists the opportunity to work with the organisation; utilising dedicated space to develop, extend and experiment with their practice and create new work.

With two unique spaces available, we are calling on artists to tell us the ways they want to use these spaces. Tell us about the projects, research, making and experiments that you want to work on, which can benefit from, and develop within, this space. **Please consider the limits, as well as the possibilities, of each space when developing your proposal.**

Spaces Available

In 2021, two venues will be available: The Ferryman's Hut at 29 Macquarie St, Teneriffe, and the Substation at 97 Wynnum Rd, Norman Park.

Residency length at Ferryman's Hut: 2 weeks

Residency Length at Norman Park Substation: 2-4 weeks

Spaces are available: January – December 2021

What is Metro Arts Looking for?

For the 2021 Artist in Residence program, Metro Arts is looking for high quality, ambitious proposals that demonstrate:

- An engagement with contemporary art practices/contexts
- An existing practice or project that will be developed during the residency
- Projects that are suited to the spaces on offer, and use these in meaningful ways
- Openness to critical discourse and to engagement with the Metro Arts community



Who Should Apply?

Individual and collective practitioners across all art forms are invited to apply, including visual artists, performers, writers, sound artists, and beyond (and in between). Emerging and established artists are invited to apply.

Applicants should intend to actively and regularly use the space during the term of the residency.

The successful residency applicant will be interested in using the space to develop a specific project. Additionally, they will be interested in activating the space in creative and community-building ways, as appropriate to their project.

Due to ongoing uncertainty around the Coronavirus Pandemic, this program is limited to local artists.

Please note that the residency does not include accommodation of any sort. The spaces offered are work-spaces only.

If you have specific access needs, and require more information about the spaces, please feel welcome to contact Metro Arts before applying so we can discuss your requirements.

Metro Arts is committed to engaging with a diverse range of artists within our programs and encourages applications from members of the creative community across spectrums of ability, age, race, gender identity and sexual orientation.

About the Spaces

Norman Park Substation

97 Wynnum Road, Norman Park

Residency length: 2-4 weeks

Available: January - December 2021

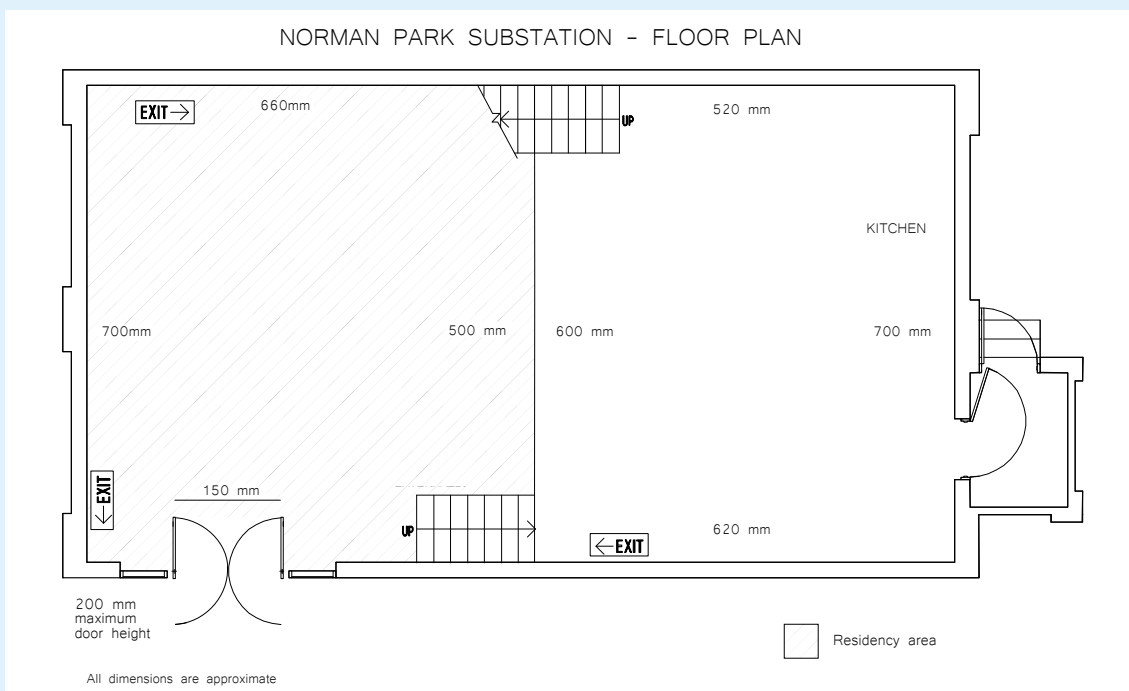
Included spaces: 46sqm Foyer/Multi-use space

As part of Metro Arts' new Artist in Residence Program, The Norman Park Substation is being made available for creatives to utilise as a studio. Metro Arts is offering residencies from 2-4 weeks in length, to facilitate artists' creative processes. Although suitable for all forms of artists' practice, the space would be ideal for craft and design workshops, performance/rehearsals and build spaces for production designers and costume designers.

*It is an expected outcome of the program that the community will be encouraged to enter the space for the duration of, or throughout, the residency, or to engage with a public outcome.

Please note that this space is a common area within the Norman Park facility, and will be accessible by other Norman Park tenants during the residency.

Visit our [website](#) for more photos and information about Norman Park Substation.



Ferryman's Hut

29 Macquarie St Teneriffe (along the river)

Residency length: 2 weeks maximum

Available: January - December 2021

Included space: 60sqm Hut

The Ferryman's Hut is a riverside creative space located in Teneriffe, which offers artists a beautiful venue for their work. The space is ideal for the development of performances, solo practitioners, exhibition artists, writers and small businesses. With excellent foot traffic in the local area, particularly on weekends, the venue is ideal for site-based activations, pop-up shops and exhibitions among other things.

Visit our [website](#) for more photos and information about Ferryman's Hut.



What Metro Arts Provides

- Provision of space, as outlined above, for a duration of 2 weeks at the Ferryman's Hut or between 2 and 4 weeks at the Norman Park substation
- An artist fee of \$600 per week, per project
- Marketing support for any public outcomes or events that form part of your residency (all promotion and communication is delivered electronically)
- Facilitation of public outcomes
- Advice and support from Metro Arts' staff; including curatorial support and professional development

Program Participant Responsibilities

- Any transportation, installation, de-installation and insurance for loss and/or damage of artwork/equipment
- Providing high quality images of your work for promotion, in addition to providing all necessary information for promotion of the residency and any public outcomes within marketing deadlines
- Liaising with Metro Arts for contractual arrangements and use of venue and equipment
- Adhering to the rules and policies specified in the contract and following the direction of Metro Arts' staff with respect to venue use
- Providing written evaluation of the project within six weeks of the project's conclusion
- Sourcing special equipment should it be required for your project

Program participants must have Public Liability Insurance up to the value of \$20 million.

Application Form

Please complete the online application form, available on our website and below. Please ensure you have read this application guide carefully BEFORE commencing as the application form must be completed in one session (you cannot save and continue later).

A run down of the application form:

- Basic questions such as your contact details, availability in 2021, name of proposed project and short synopsis (max 300 words)
- Upload of attachments (details below)
- Data and Demographic questions (note answers to this section will not be used to assess your proposal)

Application Attachments

1

RESIDENCY PROPOSAL: 1 – 3 PAGES ONLY

Your proposal should be clear and concise, explicitly addressing the following requirements;

- A clear and concise artist statement
- Succinctly discuss your practice and how this residency will contribute to its development
- Explain why the space you have chosen is specifically suited to your project
- A brief outline of your residency objectives
- A brief outline of how you will use the space, including potential time allocation.

2

CV FOR EACH ARTIST INVOLVED (2 pages maximum)

This should be provided as one pdf document with maximum 2 pages per artist involved.

3

ARTISTIC SUPPORT MATERIAL

This should indicate your practice, and the specific project that you will be working on in the residency. It can include work in development, as well as previous work. All support materials must be clearly labelled.

A maximum of 15 digital images, or maximum 10 minutes of video or sound samples can be supplied. If including both video and stills in your proposal, reduce the number of images to 10 and duration of footage to five minutes. Digital images and footage should be supplied as a pdf document with links to the relevant material (such as a link to a dropbox or google drive folder).

If submitting a writing sample, this should be no longer than 10 pages.

You may also attach up to three examples of writing about your work (such as reviews or catalogues).

File naming convention...

Please use the following file naming convention when uploading your attachments: 'Applicant Surname, Applicant First Name_Project Name_Attachment Name'.

For example,

- 'Smith, Lesley_The Art Project_Program Proposal'
- 'Smith, Lesley_The Art Project_Key Creatives'
- 'Smith, Lesley_The Art Project_Support Material'

Selection Process

Key selection criteria will include: artistic merit, suitability of the project to the space, and the impact of the residency on the career or practice of the artist.

All applications for AIR are assessed by the Metro Arts' Programming and Curating team. Should a team member be part of, or associated with, an application they do not participate in the selection round.

Information Session

Saturday 3 October, 4.30pm
Metro Arts Studios, 111 Boundary St, West End
Meet the Metro Arts Team and find out more about the application process for the Artist In Residence Program and the Exhibition Program (currently also open for proposals).
Applicants are strongly encouraged to attend this session.

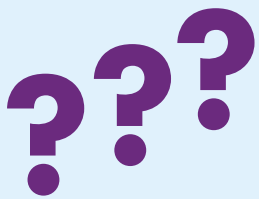
Applications Close

Sunday 18 October 2020, 11:59pm.
Apply online – Please use this link if you have a Google account
Apply via email – Please use this link to download a Word doc and submit via email

Notification

You will be notified whether you are successful or not by Monday 9 November 2020.

*The Entire Universe is Inside of You by Rebecca Ross, 2020
Image by Aaron Chapman*



Have Questions?

Contact the Team:

If you have any questions about the Artist-in-Residence Program application process, please contact Metro Arts on (07) 3002 7100 or:

matt@metroarts.com.au / jenna@metroarts.com.au / shani@metroarts.com.au

Metro Arts will host an Information Session on Saturday, 3rd of October, 4.30-6pm in the Rehearsal Studios at Metro Arts, 111 Boundary St West End 4101 hosted by the Metro Arts Team Exhibition Program Curator, Kyle Weise.

Metro Arts

The Metro Arts Team:

Jo Thomas, Creative Director + CEO

Kyle Weise, Exhibition Program Curator

Matt Seery, Producer

Jenna Green, Producer

Shani Gould, Programming and Ticketing Administrator

Angela Kohler, Marketing and Communications Manager

metroarts.com.au



Dedicated to a better Brisbane

The Artist In Residence program is proudly supported by Brisbane City Council.



Metro Arts acknowledges West Village and Hutchinson Builders as Founding Venue Partners. Metro Arts is proudly supported by TAFE Queensland as Education Partner, is proud Strategic Partner of Epson Australia, Setting Line Theatre Consulting, Tone Pacer Production Services and Specfun Commercial Furniture and Partner of Bones Accounting. Metro Arts Creative Development Program is supported by our Art Starters donors.



Metro Arts is supported by the Australian Government through the Australia Council, its arts funding and advisory body. Metro Arts is supported by the Queensland Government through Arts Queensland, part of the Department of Environment and Science.